



DARLINGTON

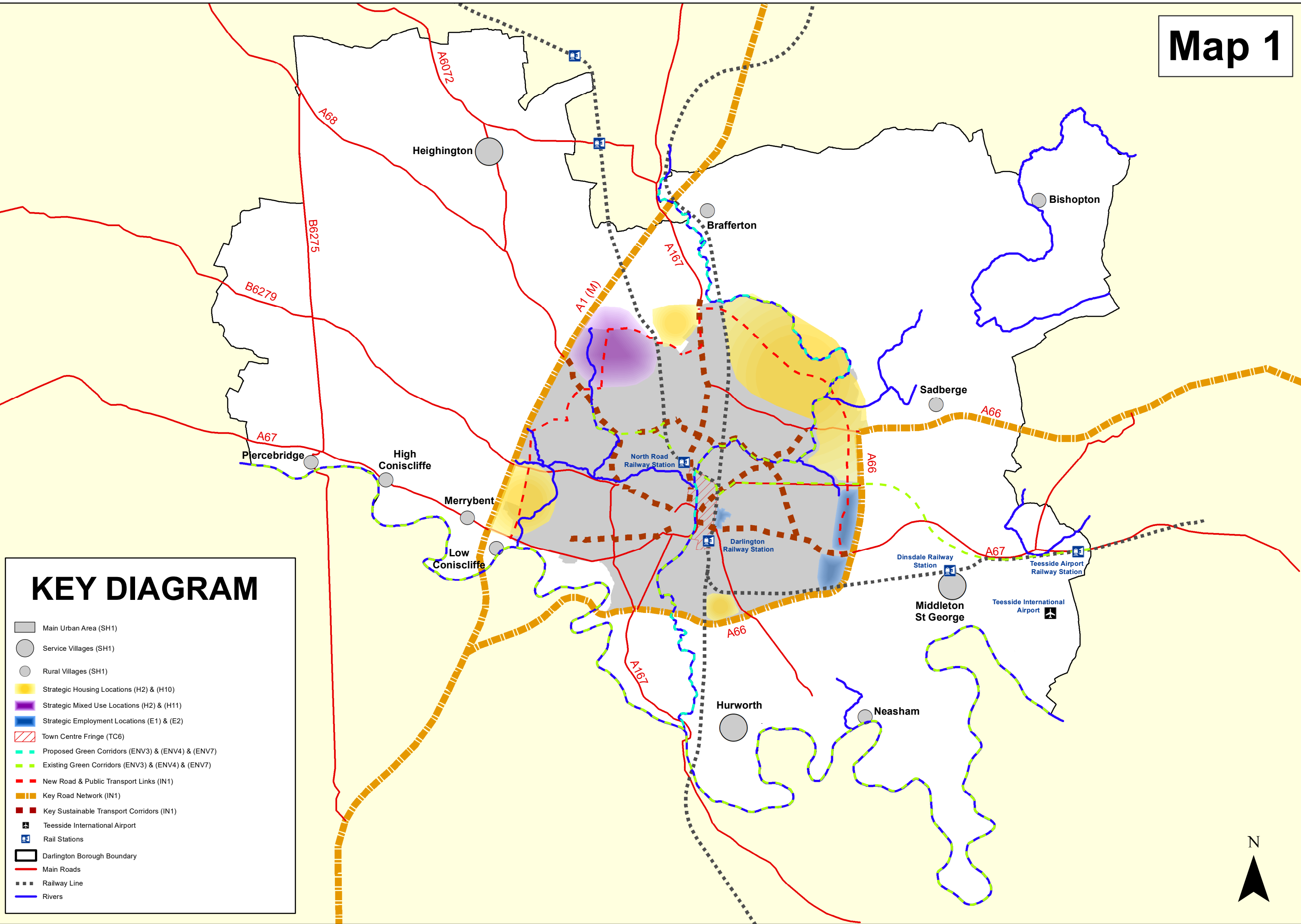
Borough Council

Darlington Local Plan (2016 -2036)

Adopted February 2022

Policies Map

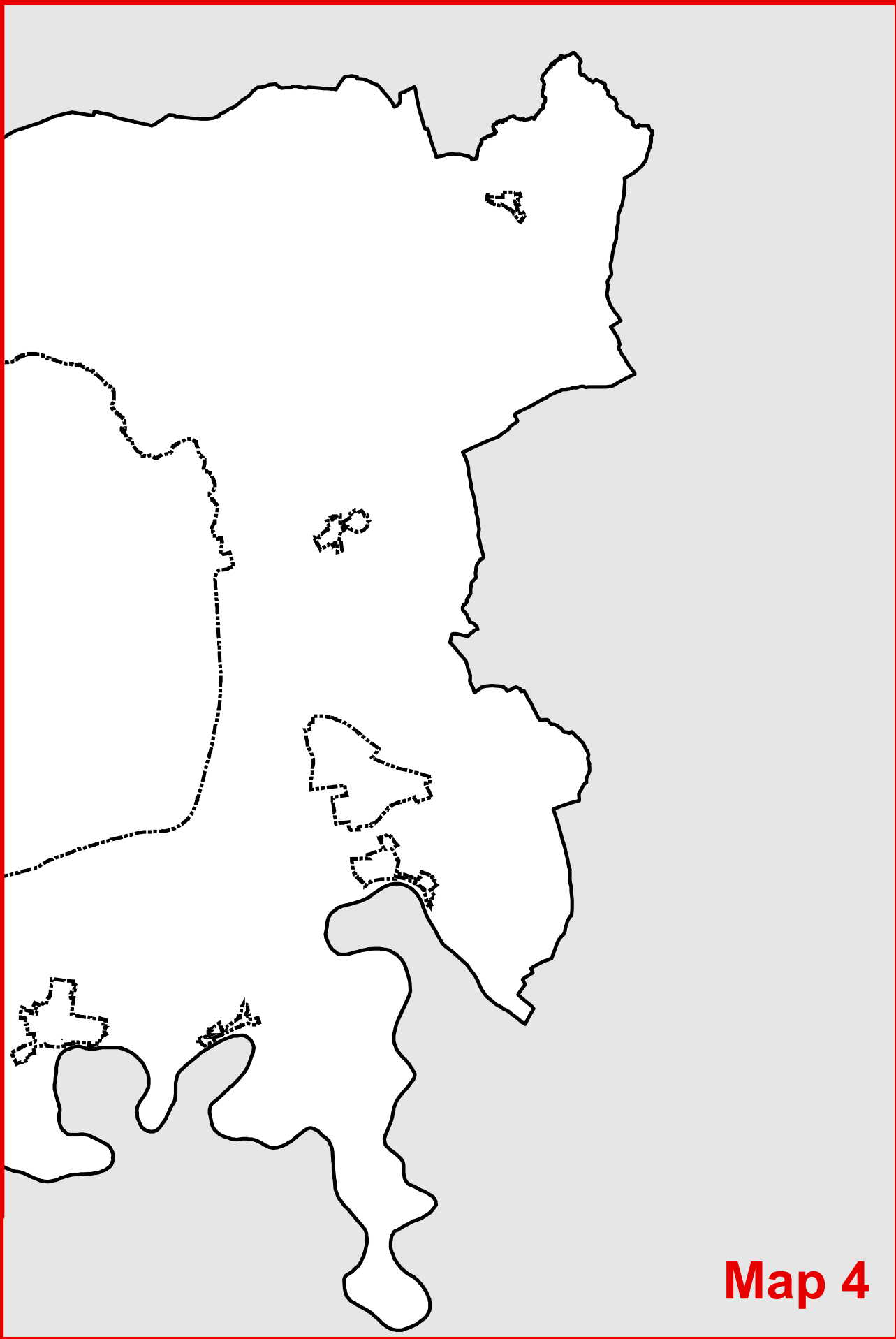
Map 1



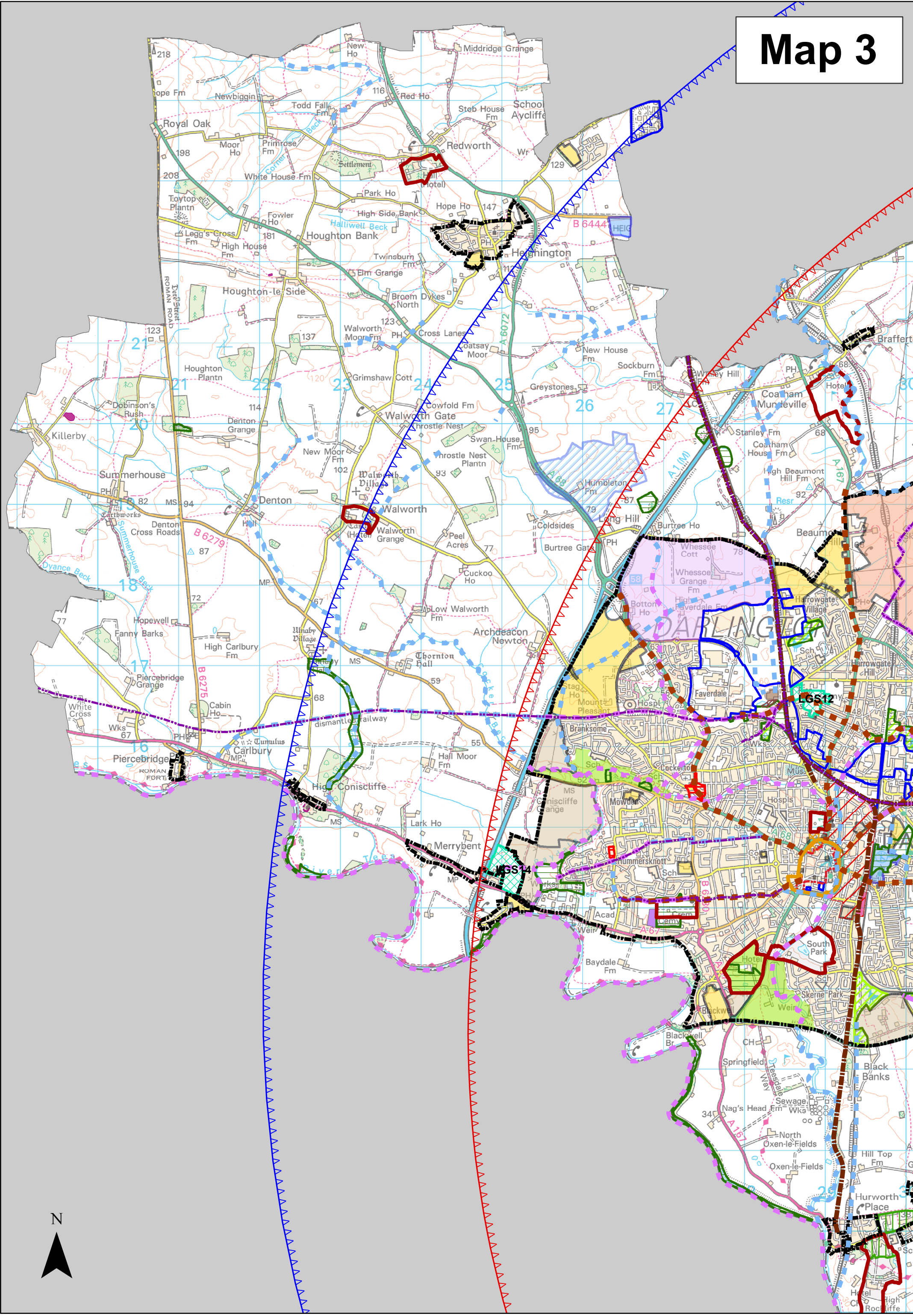
KEY DIAGRAM

- Main Urban Area (SH1)
- Service Villages (SH1)
- Rural Villages (SH1)
- Strategic Housing Locations (H2) & (H10)
- Strategic Mixed Use Locations (H2) & (H11)
- Strategic Employment Locations (E1) & (E2)
- ▨ Town Centre Fringe (TC6)
- Proposed Green Corridors (ENV3) & (ENV4) & (ENV7)
- Existing Green Corridors (ENV3) & (ENV4) & (ENV7)
- New Road & Public Transport Links (IN1)
- Key Road Network (IN1)
- Key Sustainable Transport Corridors (IN1)
- ✈ Teesside International Airport
- 🚉 Rail Stations
- ▭ Darlington Borough Boundary
- Main Roads
- Railway Line
- Rivers

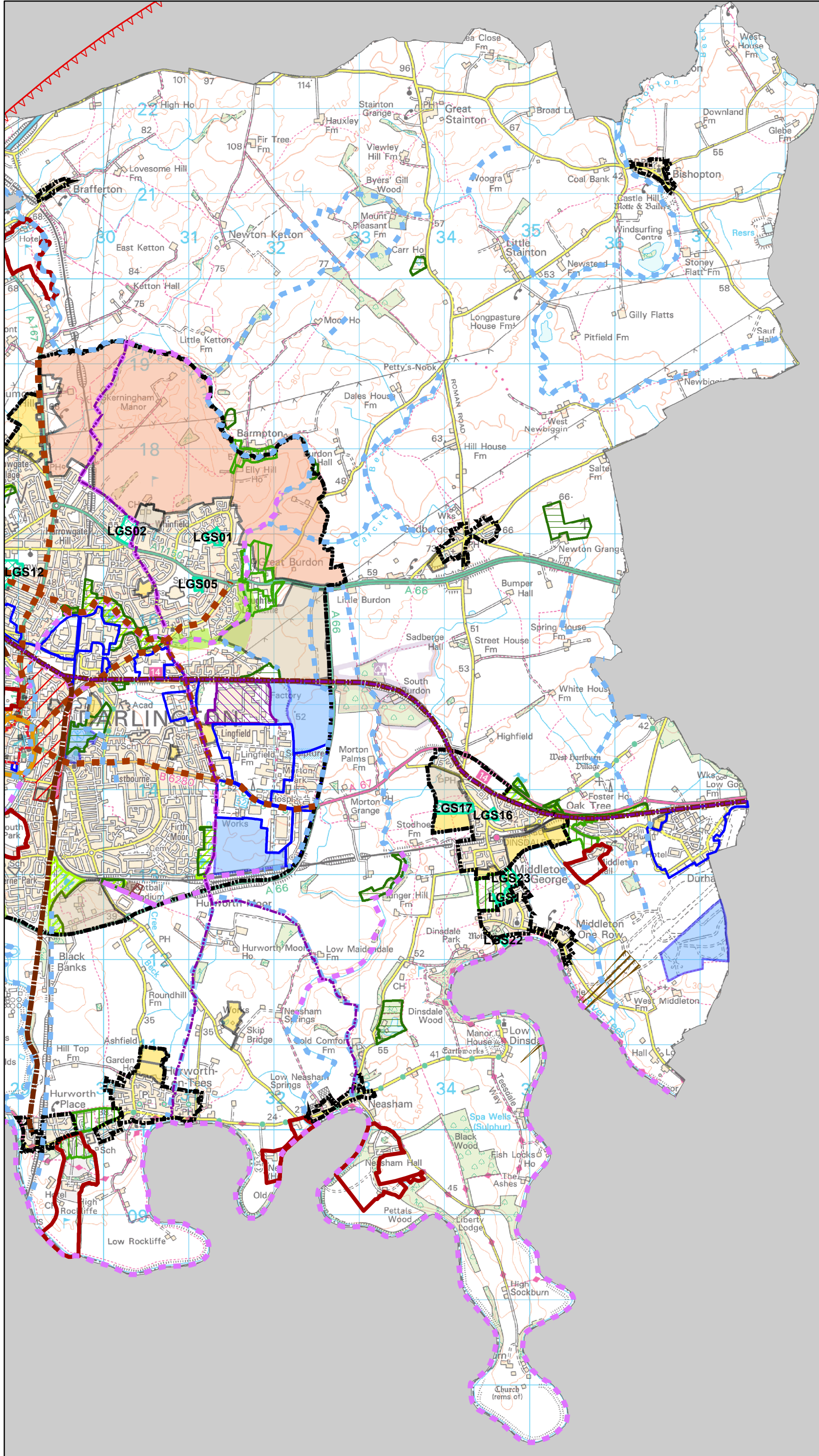




Map 3



Map 4



Map 5

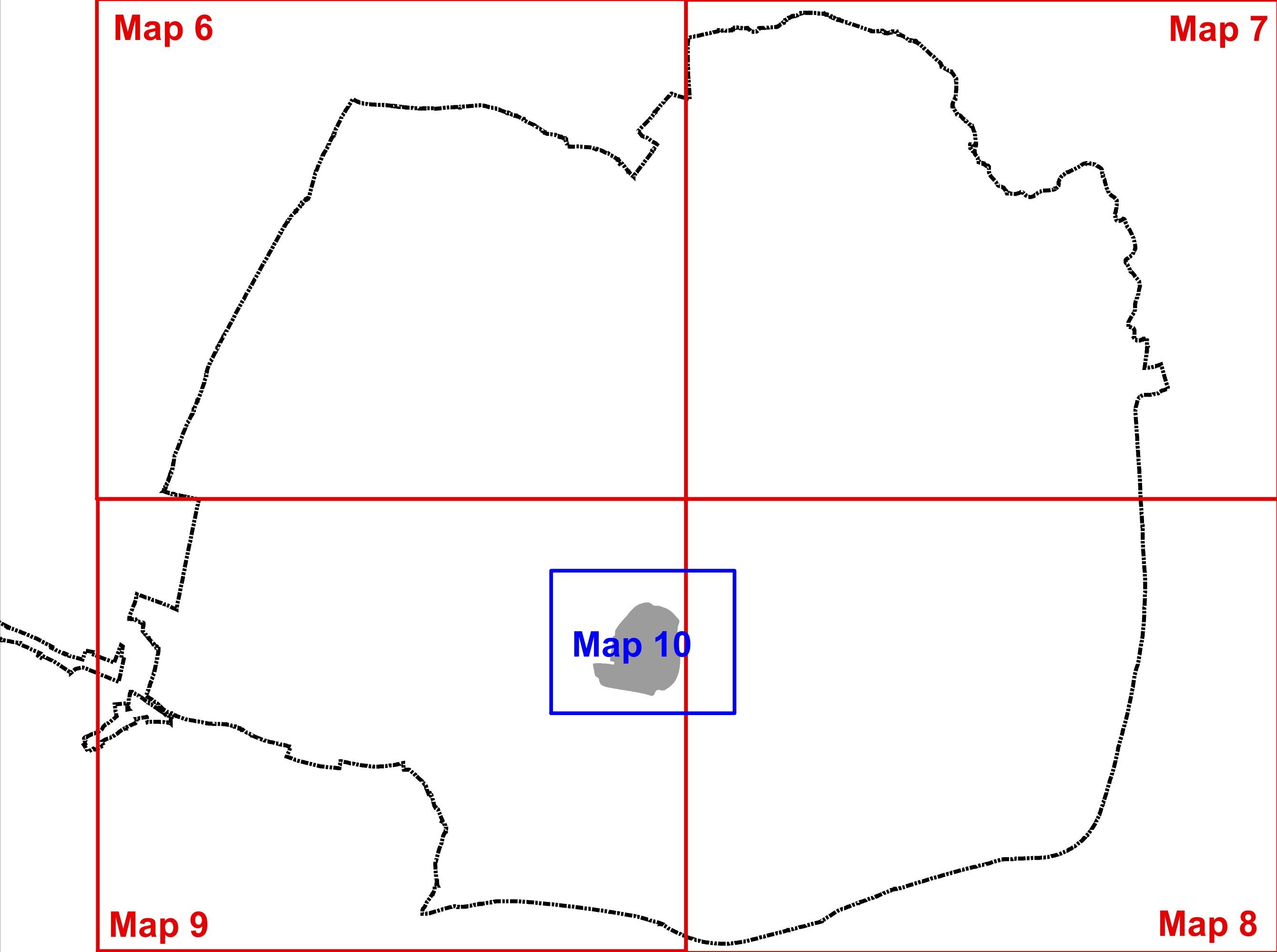
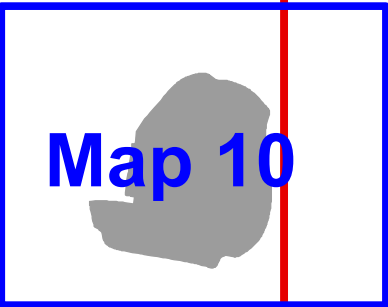
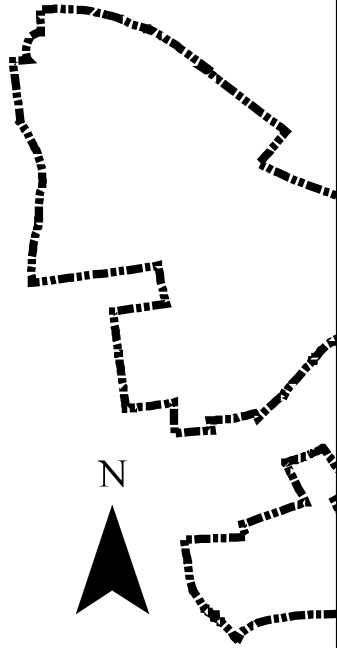
Map 7

Map 6

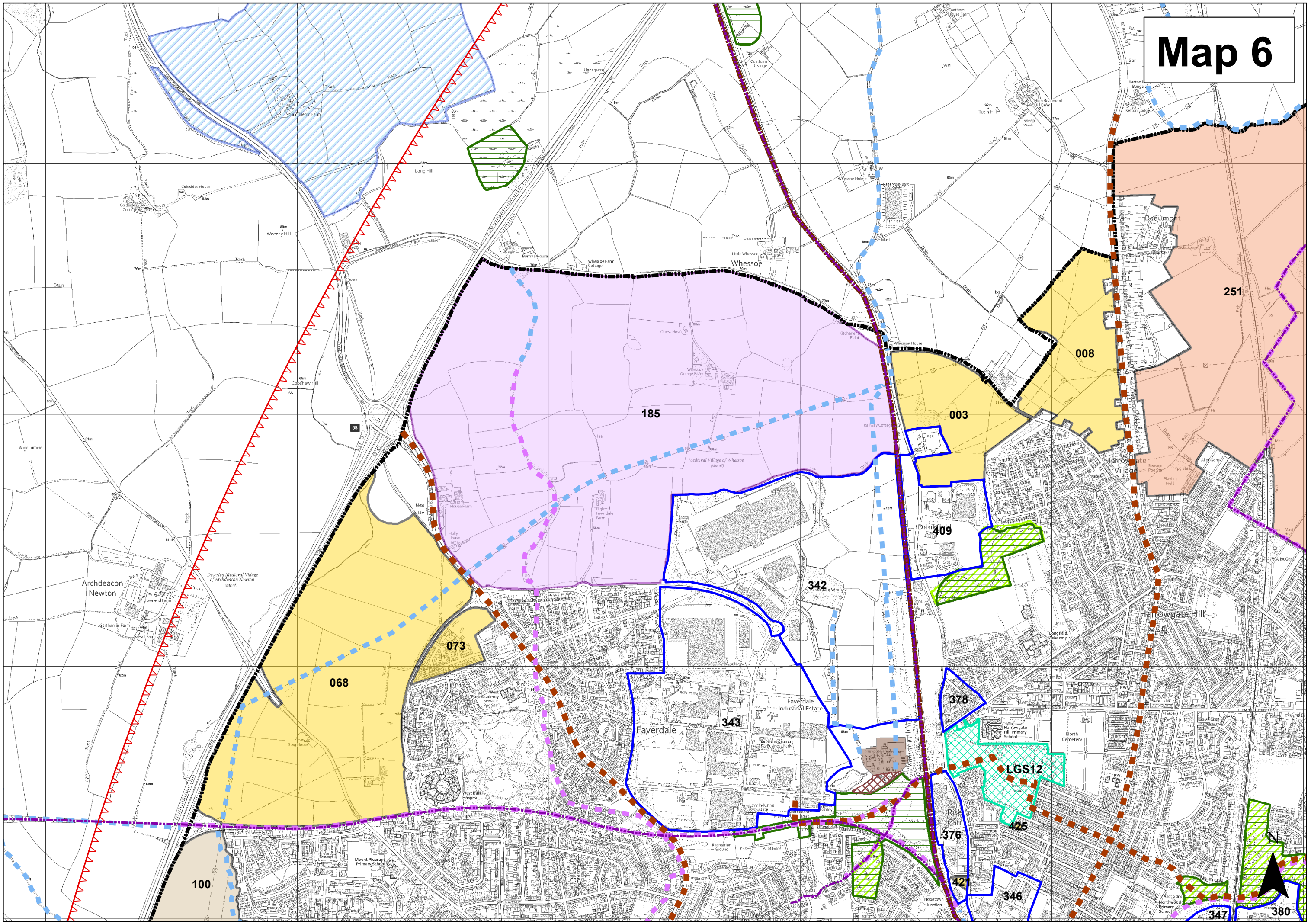
Map 10

Map 8

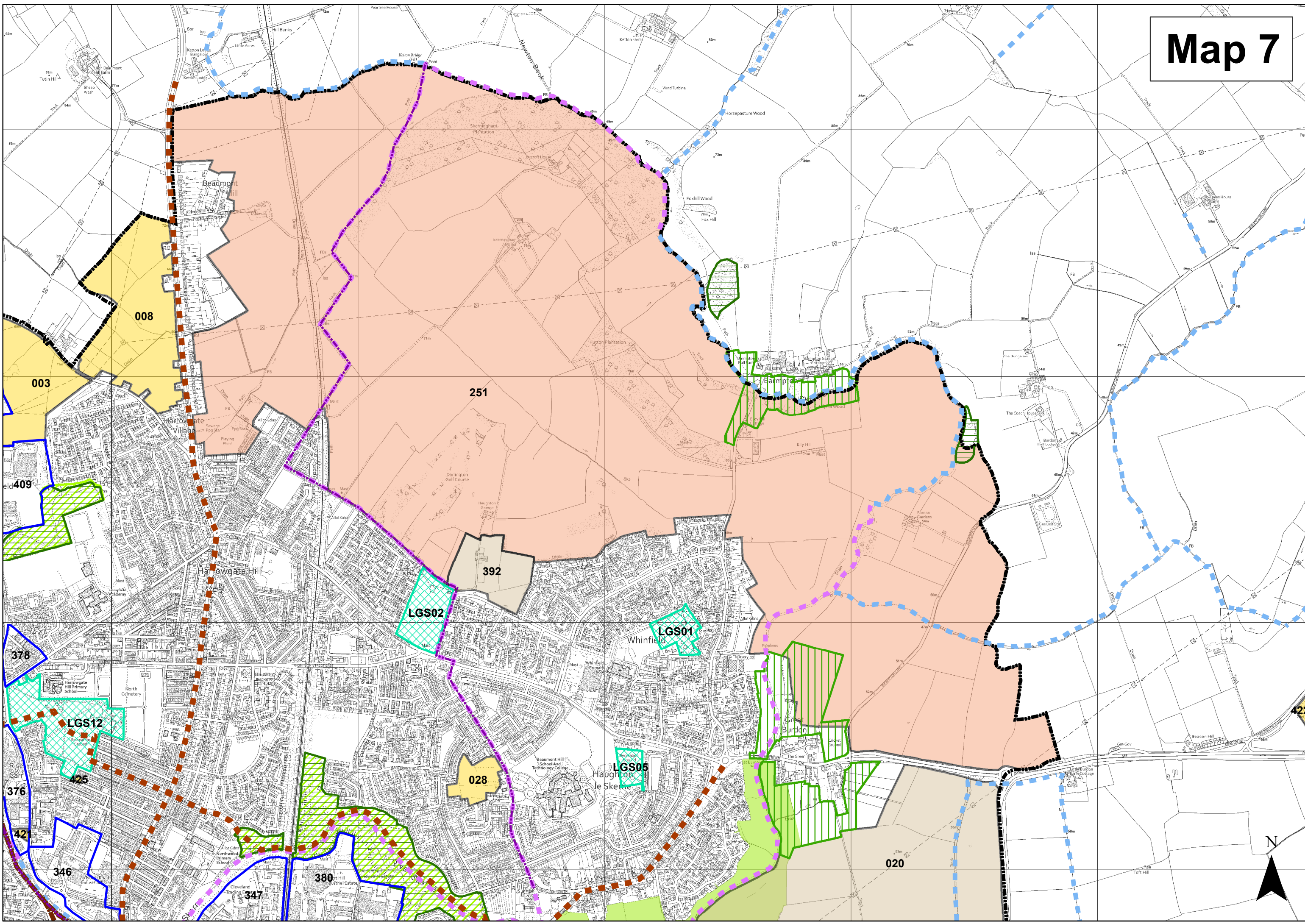
Map 9



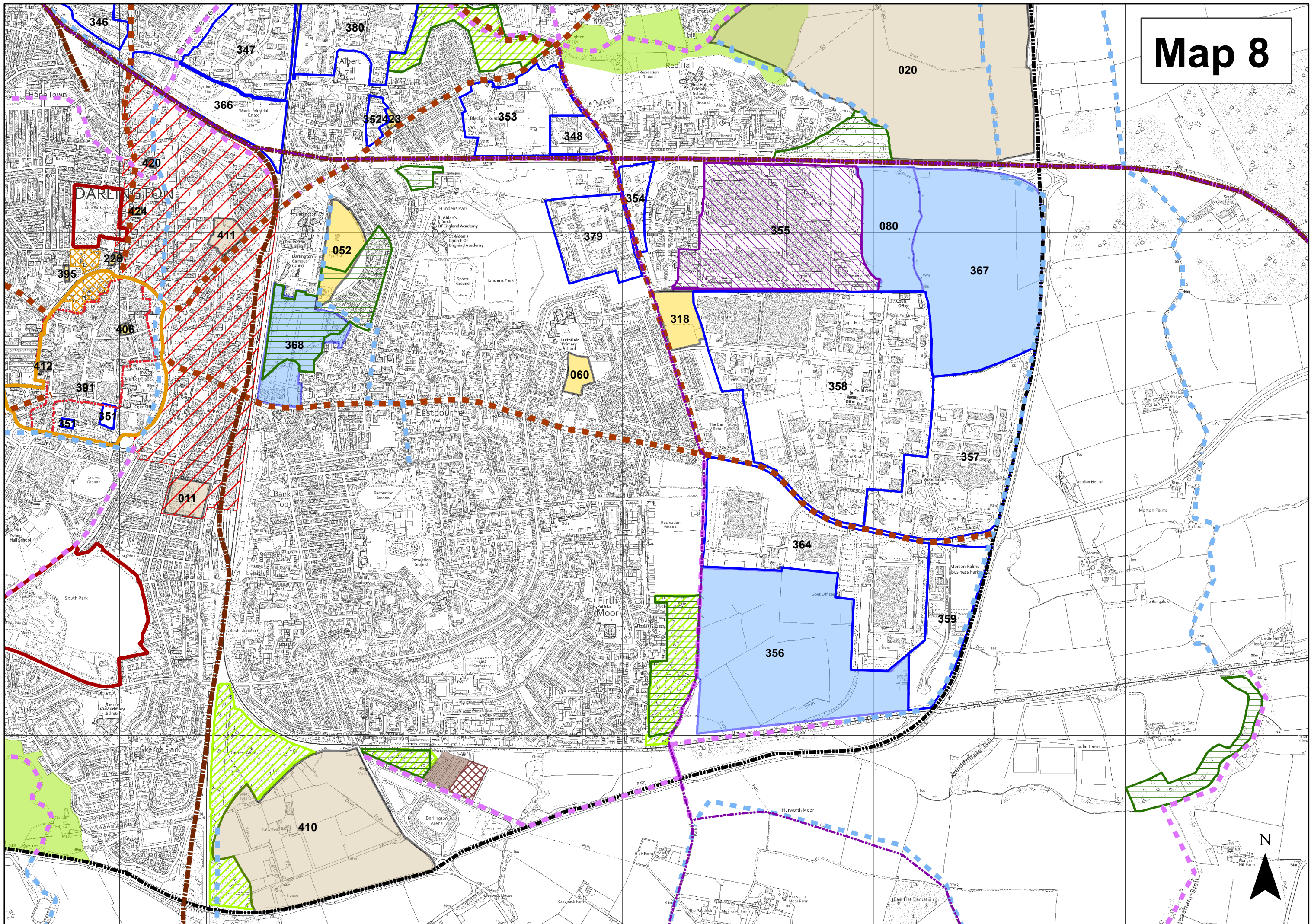
Map 6



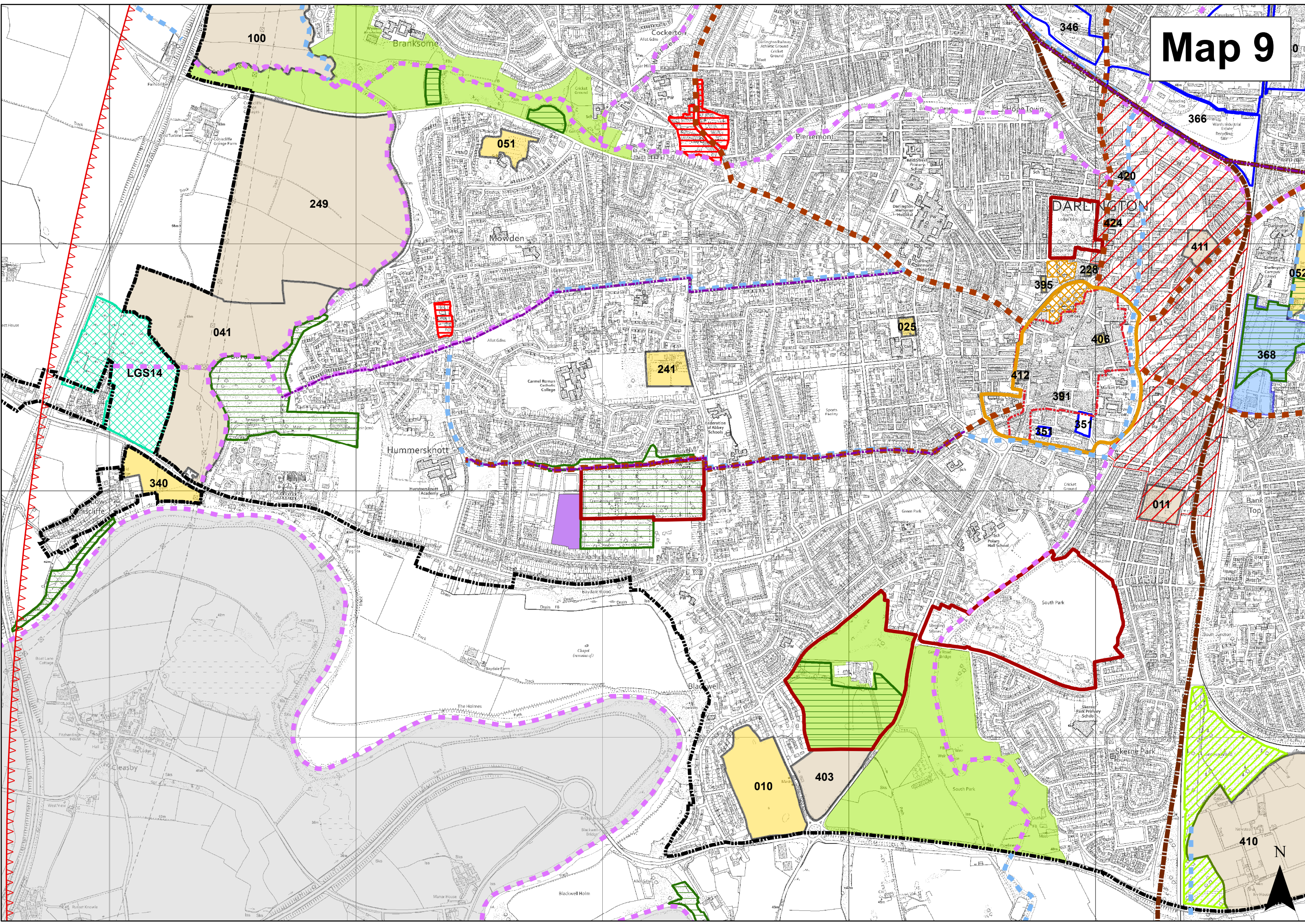
Map 7



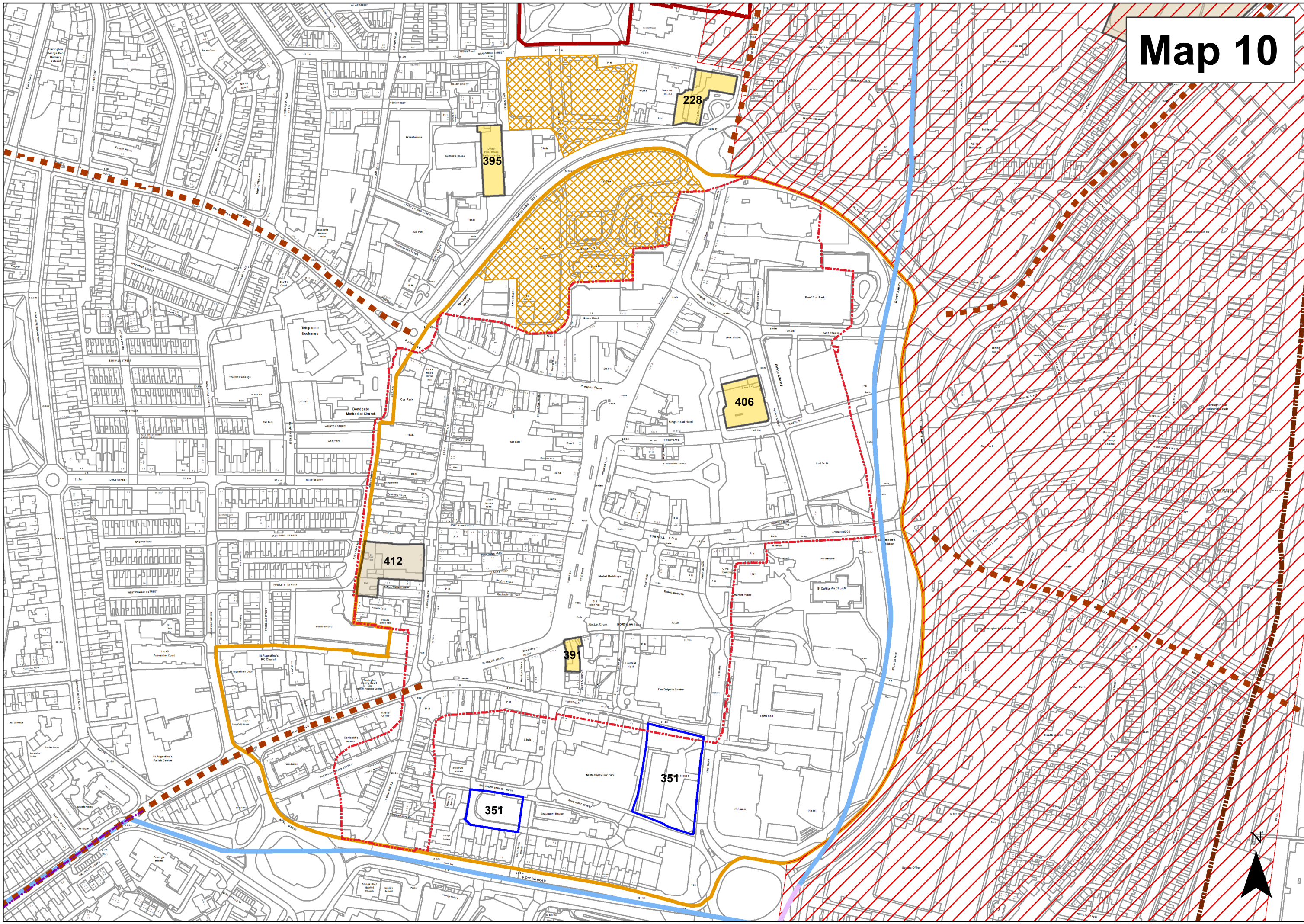
Map 8



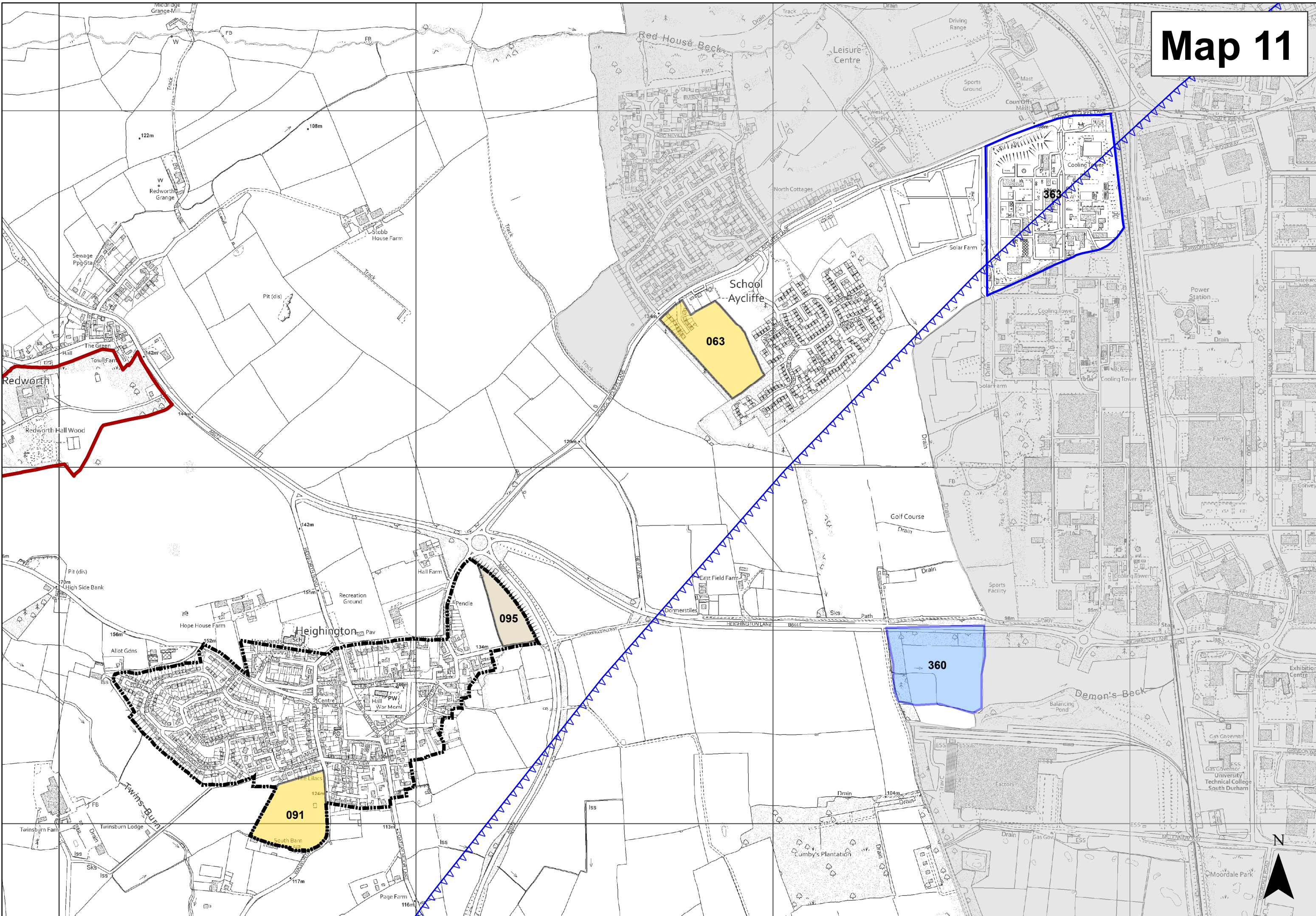
Map 9



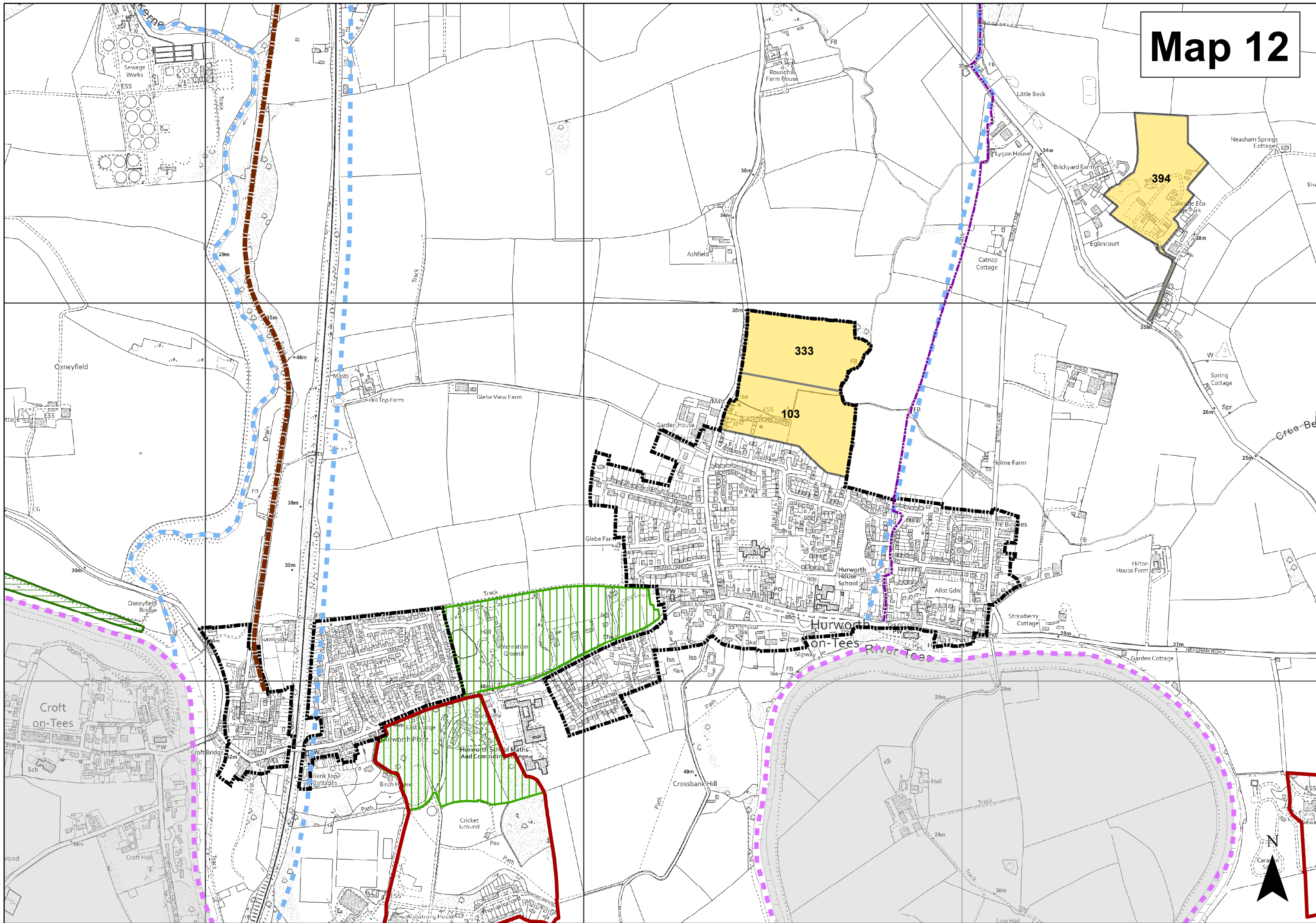
Map 10



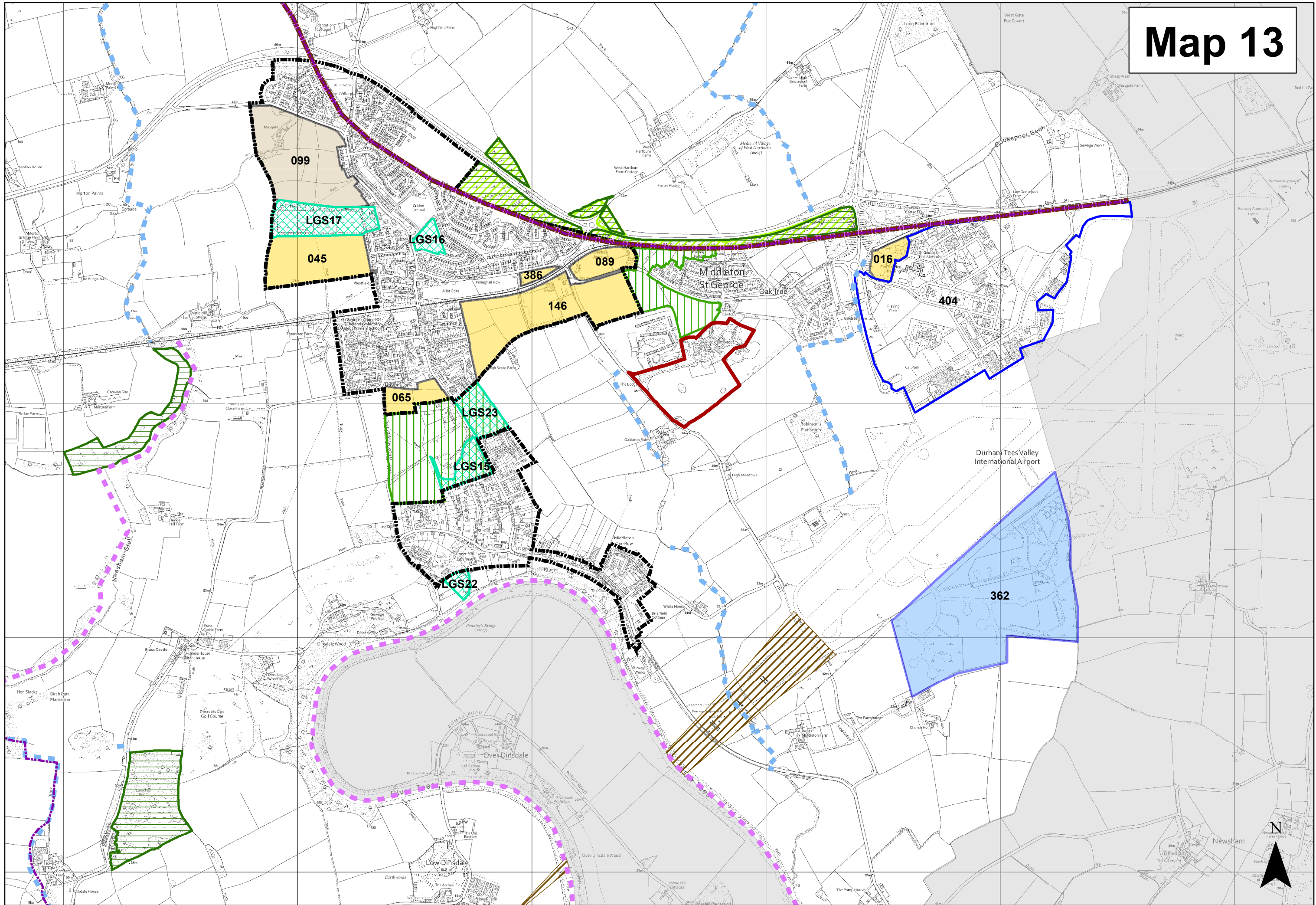
Map 11

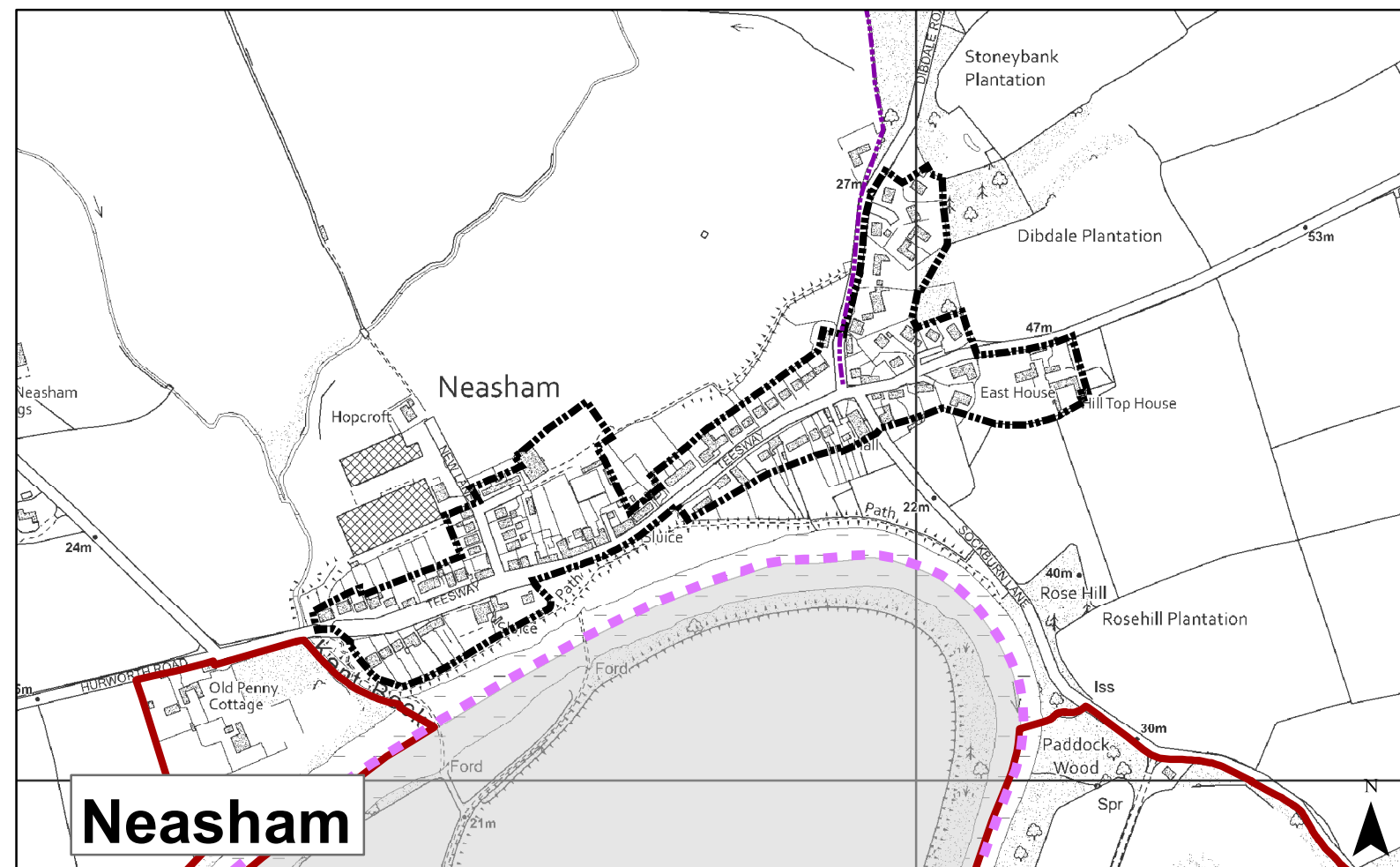
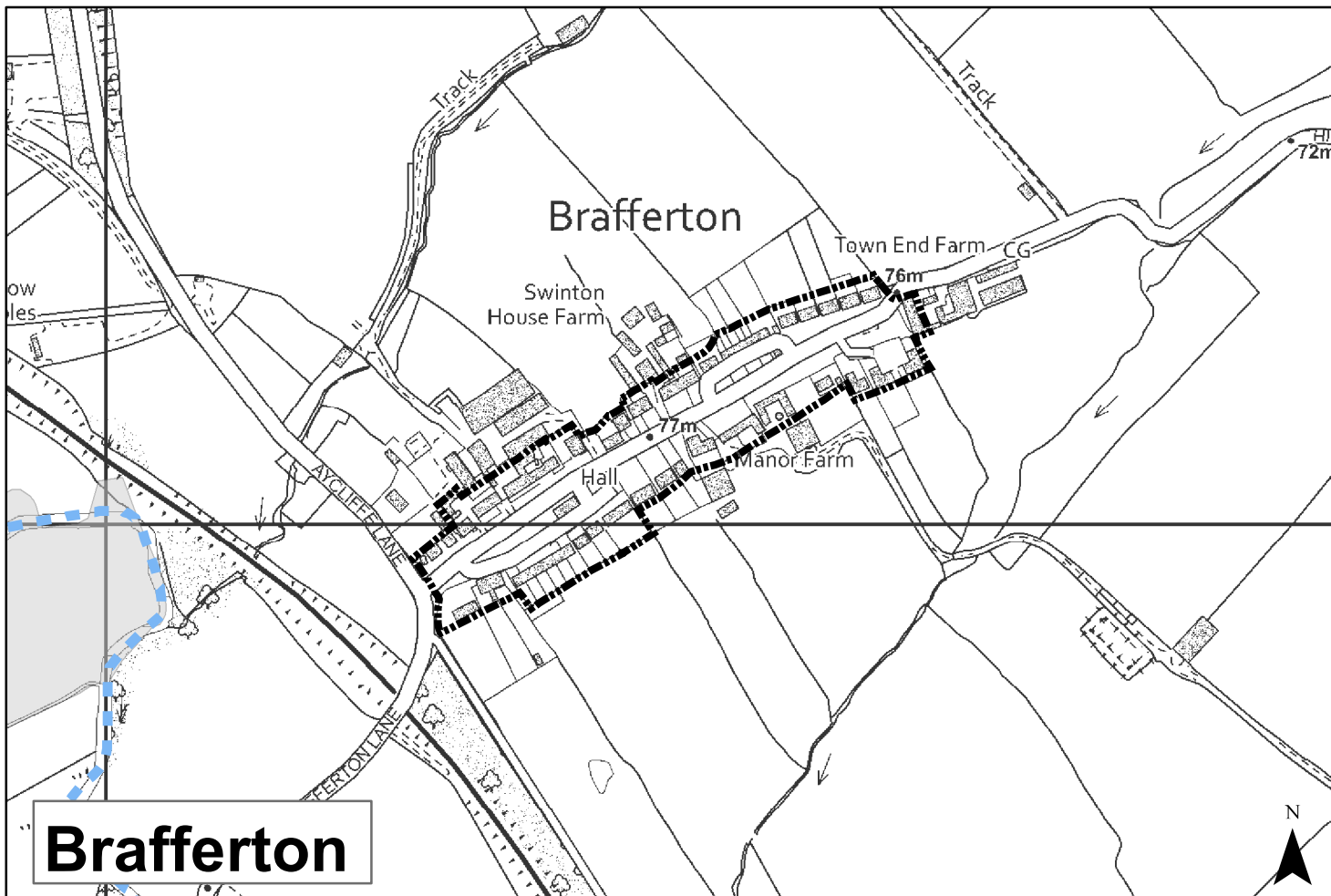
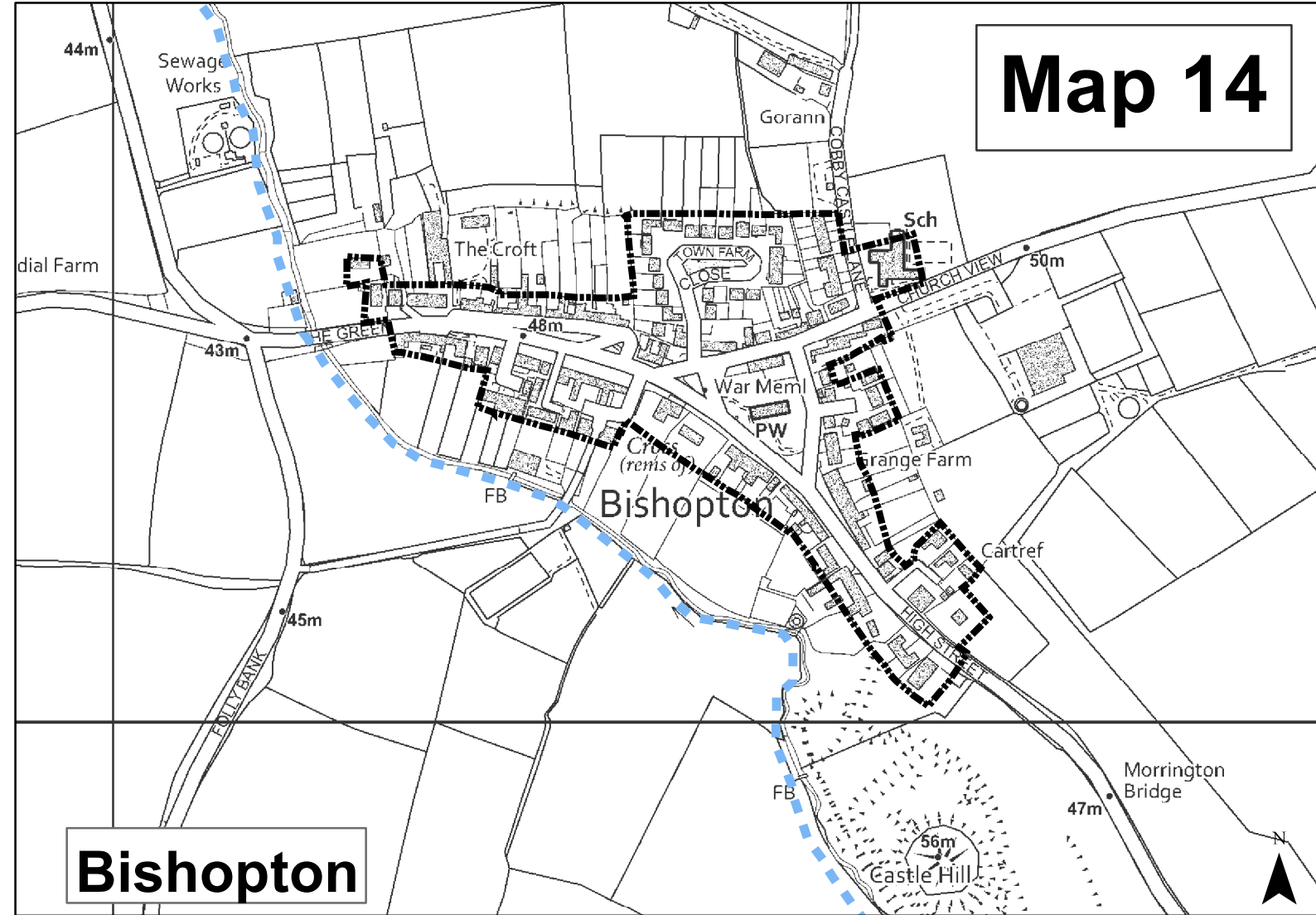
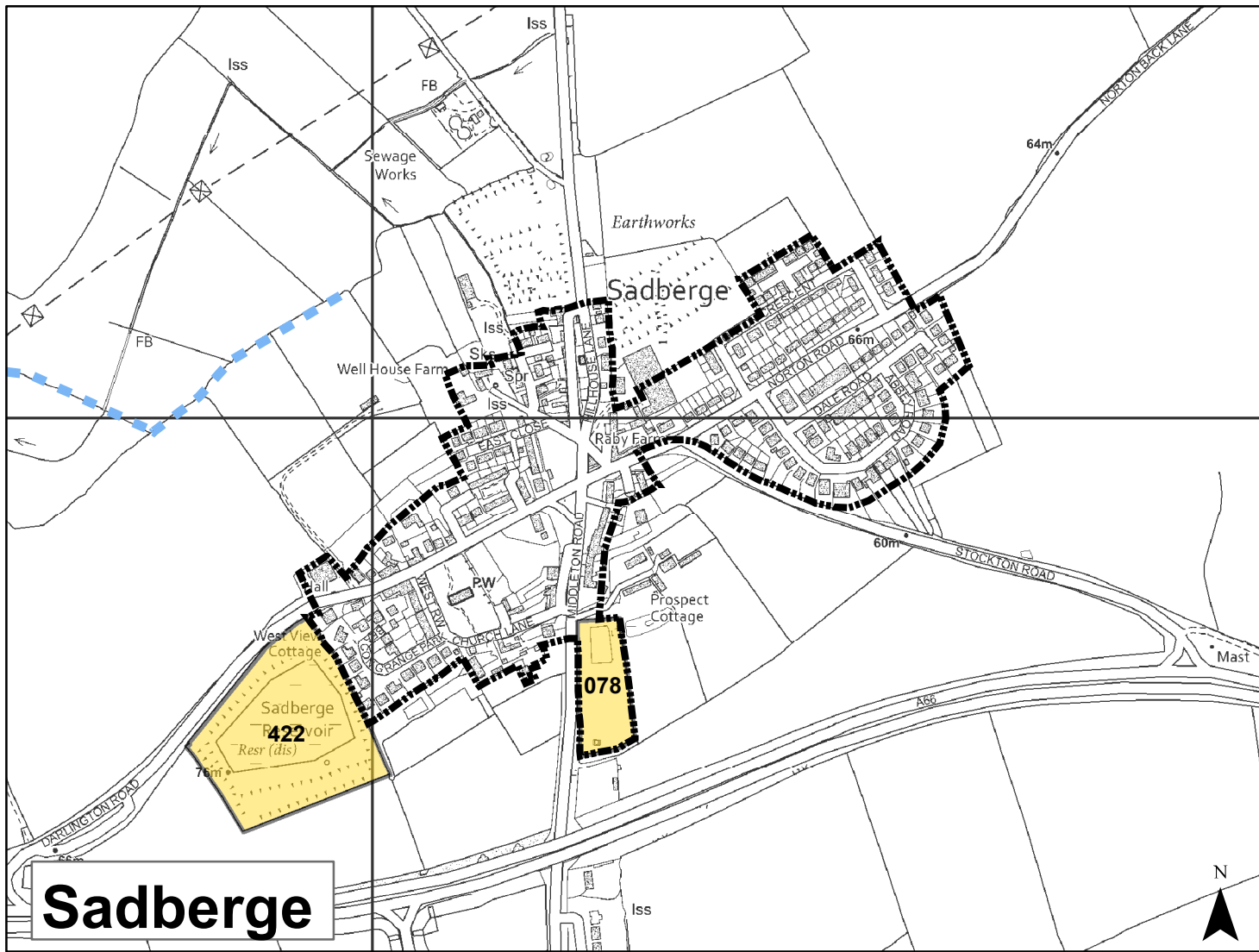


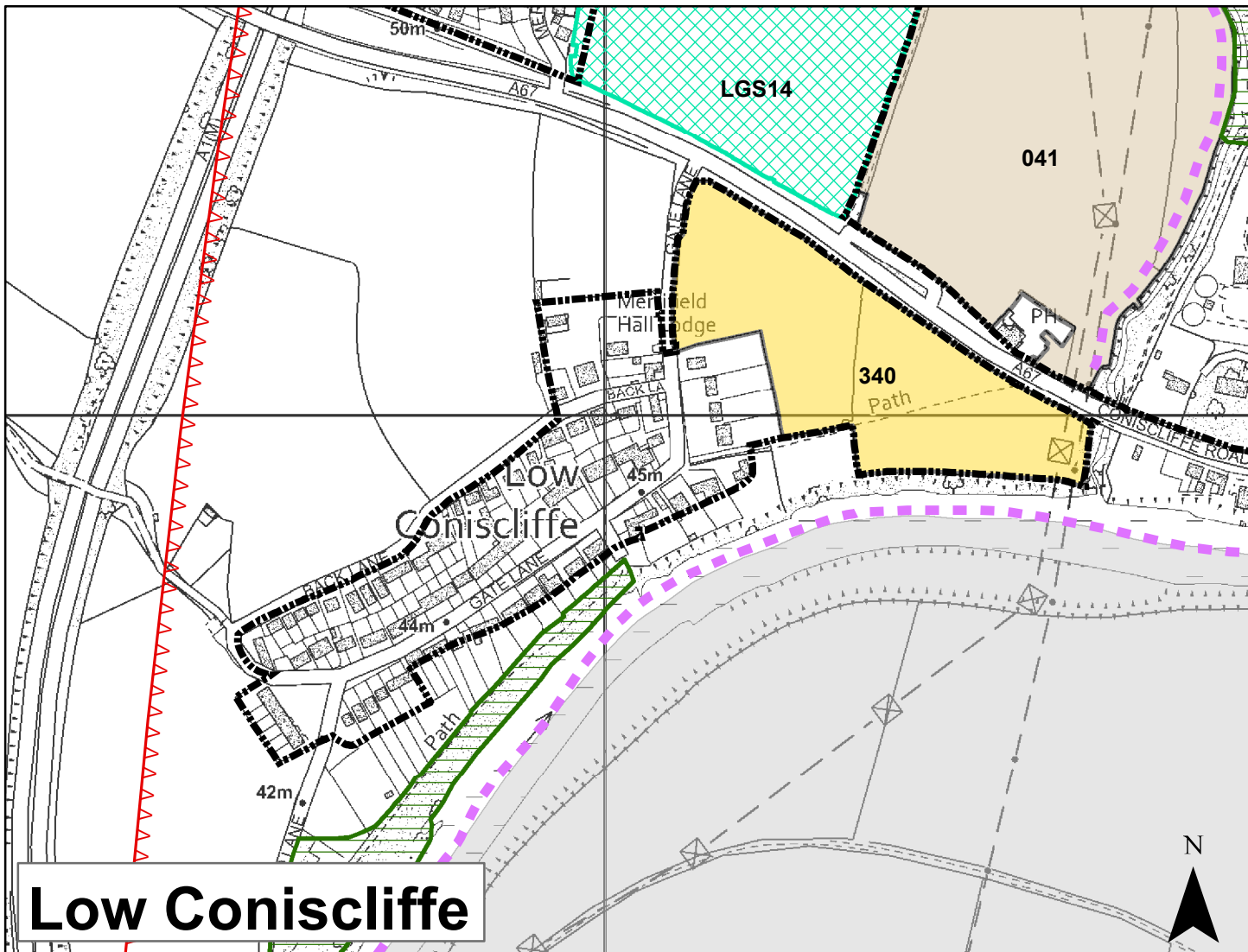
Map 12



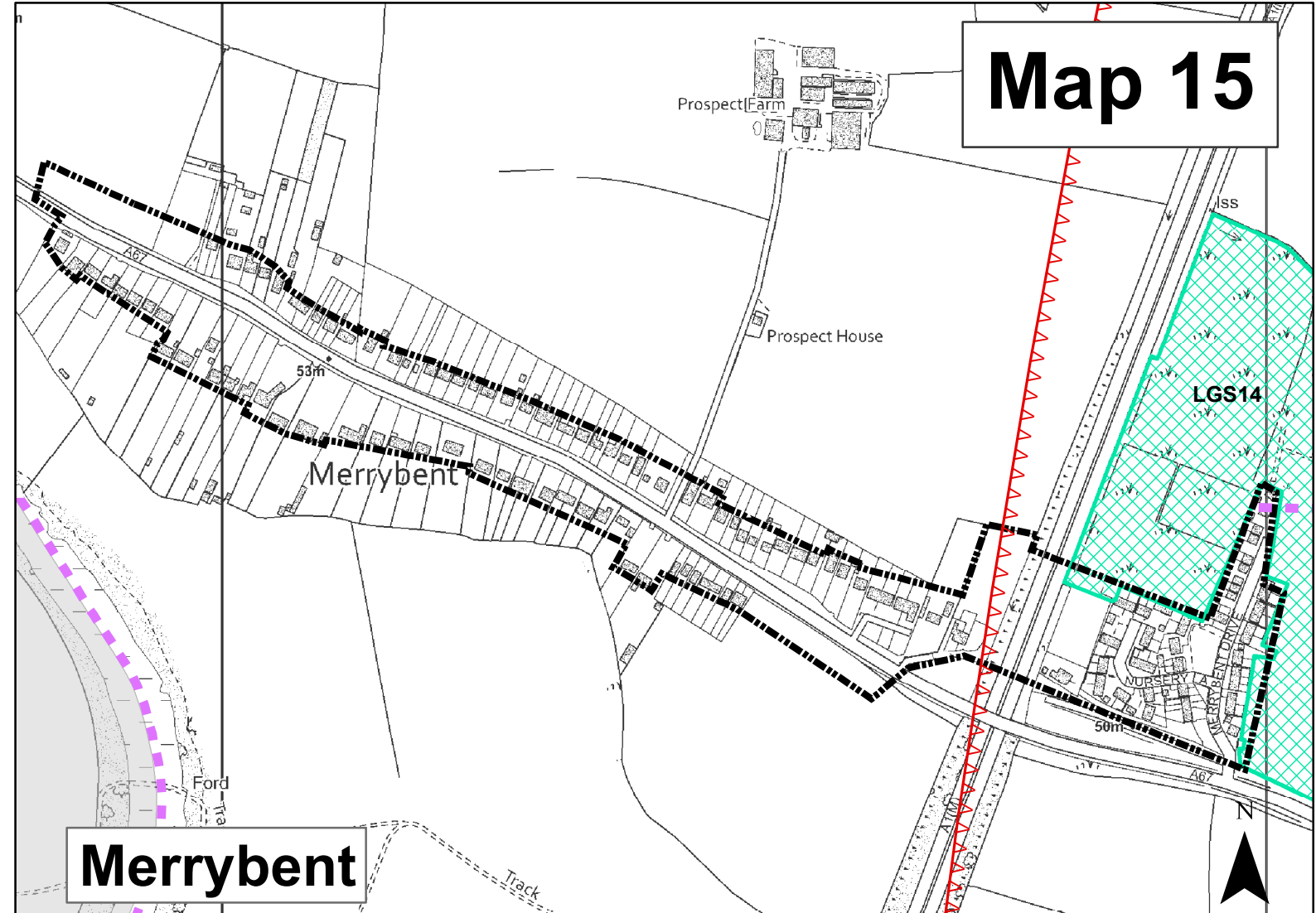
Map 13





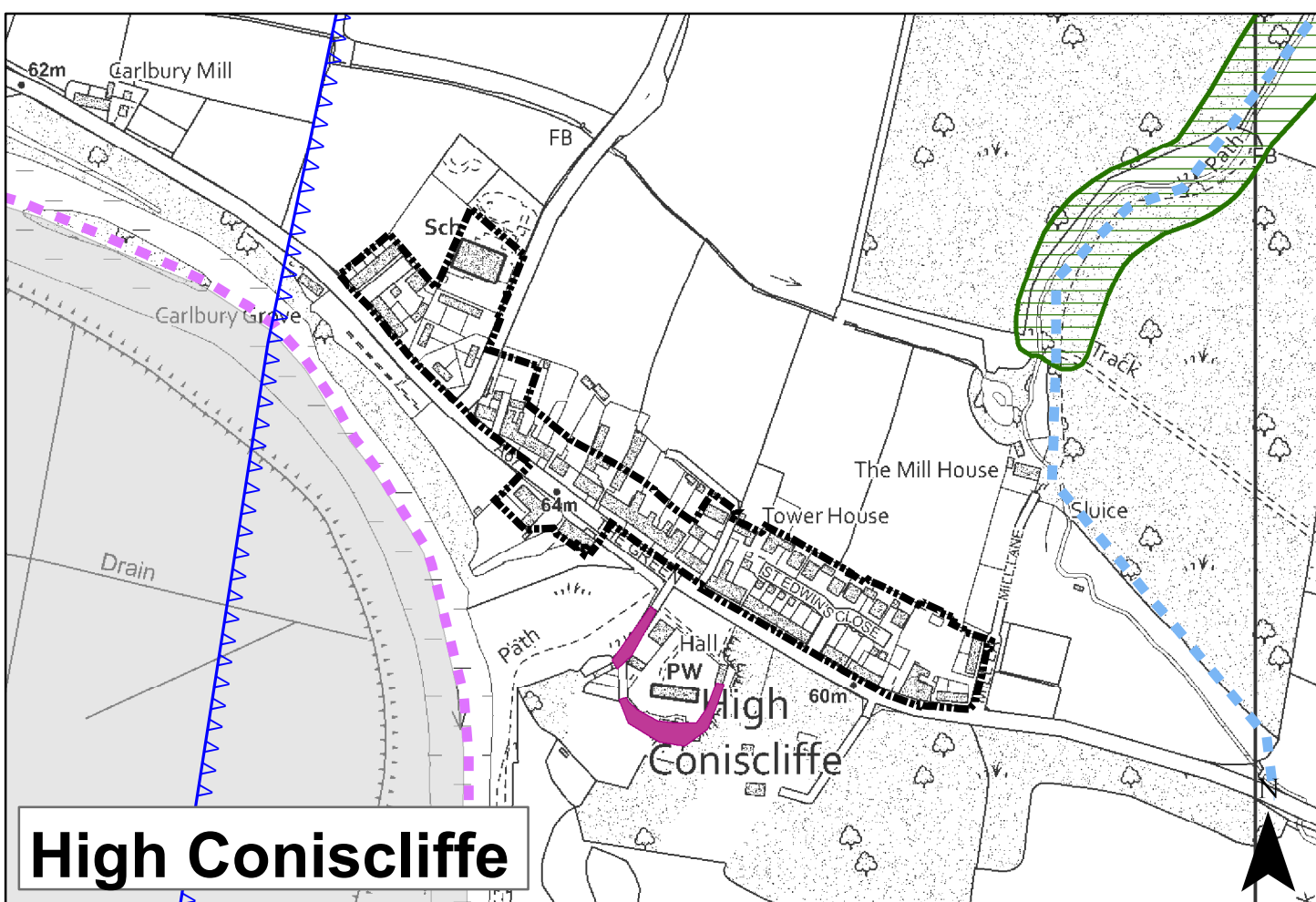


Low Coniscliffe

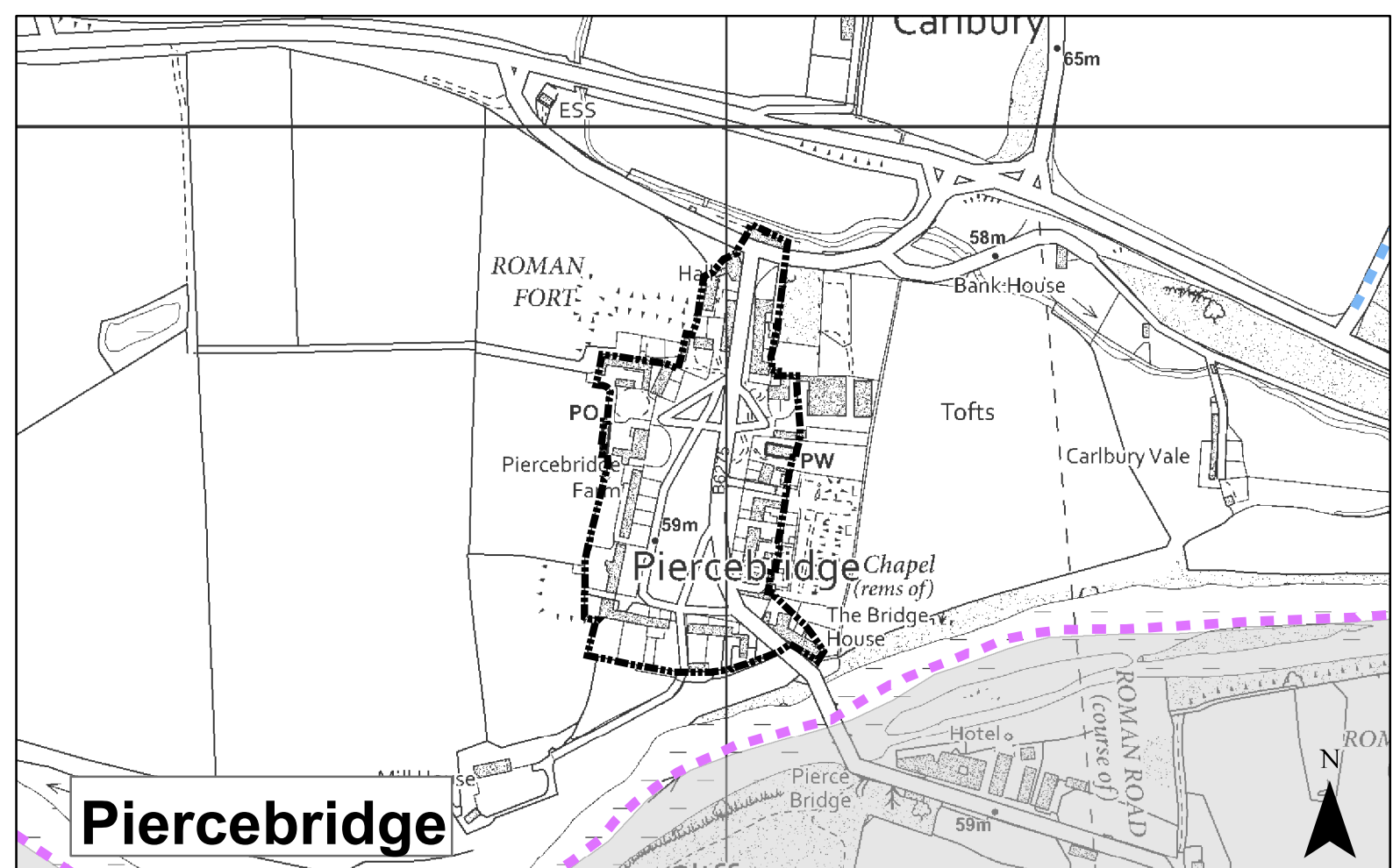


Map 15

Merrybent



High Coniscliffe



Piercebridge

- | | | | |
|---|--|---|---|
|  | Housing Allocation (H2)* |  | Local Green Space (ENV6) |
|  | Housing Commitment* |  | Local Nature Reserves (ENV7) |
|  | Skerningham Allocation (H2) & (H10)* |  | Local Wildlife Sites (ENV7) |
|  | Greater Faverdale Allocation (H2), (E2) & (H11)* |  | Local Geological Sites (ENV7) |
|  | Mixed Use Allocation (H2) & (E2)* |  | Town Centre Boundary (TC1) |
|  | Development Limits (H3) |  | Primary Shopping Area (TC2) |
|  | Existing Council Gypsy & Traveller Sites (H9) |  | Additional Site for Town Centre Uses (TC3) |
|  | Proposed Extension to Council Gypsy & Traveller Sites (H9) |  | District & Local Centres (TC4) |
|  | Safeguarding Existing Employment Opportunities (E1)* |  | Darlington Town Centre Fringe (TC6) |
|  | Employment Allocation (E2)* |  | Key Sustainable Transport Corridors (IN1) |
|  | Darlington Farmer Auction Mart (E3) |  | Civil Aviation Authority Public Safety Zone (IN5) |
|  | Stockton & Darlington Railway (ENV2) |  | Civil Aviation Authority - Bird Strike Hazard Area (IN5) |
|  | Historic Routes (ENV3) |  | Civil Aviation Authority Public - Radius of Critical Airspace (IN5) |
|  | Green Wedges (ENV3) |  | West Cemetery Extension (IN10) |
|  | Rural Gaps (ENV3) |  | Area Outside of Darlington Borough Council |
|  | Parklands (ENV3) |  | Numbers refer to site Reference |
|  | Proposed Green Corridors (ENV4) | | |
|  | Existing Green Corridors (ENV4) | | |